



Mystery Afghan Knit-Along



MYSTERY AFGHAN KNIT-ALONG

CLUE #4

MEASUREMENTS

Approx 10 x 8 ins [25.5 x 20.5 cm].

MATERIALS

Bernat® Satin (100 g / 3.5 oz; 149 m / 163 yds)

Contrast A (04007 Silk)

Contrast B (04010 Camel)

Contrast C (04615 Banana)

Size 5 mm (U.S. 8) knitting needles **or size needed to obtain gauge.**

GAUGE: 18 sts and 24 rows = 4 ins [10 cm] in stocking st.

INSTRUCTIONS

Make 1 Block each with A, B and C.

Cast on 47 sts.

1st row: (RS). Purl.

2nd row: Knit.

3rd row: Purl.

4th row: P8. Sl3. (P11. Sl3) twice. P8.

5th row: K8. Sl3. (K11. Sl3) twice. K8.

6th and 7th rows: As 4th and 5th rows.

8th row: As 4th row.

9th to 11th rows: As 1st to 3rd rows.

12th row: P1. Sl3. (P11. Sl3) 3 times. P1.

13th row: K1. Sl3. (K11. Sl3) 3 times. K1.

14th and 15th rows: As 12th and 13th rows.

16th row: As 12th row.

Rep these 16 rows for pat until work from beg measures 8 ins [20.5 cm], ending with 10th row. Cast off.

STITCH GLOSSARY

Approx =

Approximately.

Beg = Beginning.

K = Knit.

RS = Right side.

P = Purl.

Pat = Pattern

Rep = Repeat.

RS = Right side.

St(s) = Stitch(es).

Sl3 = Slip next 3 stitches

purlwise with yarn at

RS of work.

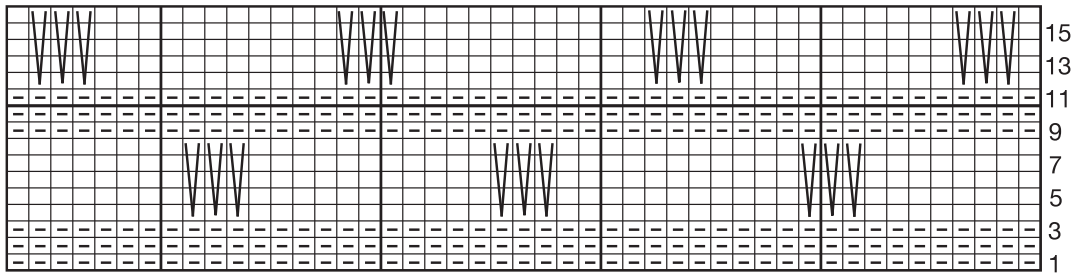
WS = Wrong side.



P.O. Box 40, Listowel ON N4W 3H3

"home style... life style... your style."

CHART: BLOCK #4




Start Here

KEY

☐ = Knit on RS rows,
purl on WS rows

☐ = Purl on RS rows,
knit on WS rows

 = SI 3