



Mystery Afghan Knit-Along



MYSTERY AFGHAN KNIT-ALONG

CLUE #6

MEASUREMENTS

Approx 8 x 10 ins [20.5 x 25.5 cm].

MATERIALS

Bernat® Satin (100 g/3.5 oz; 149 m / 163 yds)

Contrast A (04007 Silk)

Contrast B (04010 Camel)

Contrast C (04615 Banana)

Size 5 mm (U.S. 8) knitting needles **or size needed to obtain gauge.**

GAUGE: 18 sts and 24 rows = 4 ins [10 cm] in stocking st.

STITCH GLOSSARY

Approx = Approximately.

Beg = Beginning.

Cont = Continue.

K = Knit.

K2tog = Knit next 2 stitches together.

Pat = Pattern.

Pssso = Pass slipped stitch over.

Rep = Repeat.

RS = Right side.

Sl1 = Slip next stitch.

Ssk = Slip next 2 stitches knitwise one at a time.

Pass them back onto left-hand needle, then knit through back loops together.

St(s) = Stitch(es).

WS = Wrong side.

Yo = Yarn over.

INSTRUCTIONS

Make 1 Block each with A, B and C.

Cast on 45 sts.

1st row: (RS). K3. yo. ssk. *K5. K2tog. yo. K1. yo. ssk. Rep from * to last 10 sts. K5. K2tog. yo. K3.

2nd and alt rows: K2. Purl to last 2 sts. K2.

3rd row: K4. *yo. ssk. K3. K2tog. yo. K3. Rep from * 3 times more. K1.

5th row: K5. *yo. ssk. K1. K2tog. yo. K5. Rep from * to end of row.

7th row: *K6. yo. Sl1. K2tog. pssso. yo. K1. Rep from * 3 times more. K5.

9th row: K5. *K2tog. yo. K1. yo. ssk. K5. Rep from * to end of row.

11th row: K4. *K2tog. yo. K3. yo. ssk. K3. Rep from * 3 times more. K1.

13th row: K2. *K1. K2tog. yo. K5. yo. ssk. Rep from * 3 times more. K3.

15th row: K2. K2tog. yo. *K7. yo. Sl1. K2tog. pssso. yo. Rep from * to last 11 sts. K7. yo. ssk. K2.

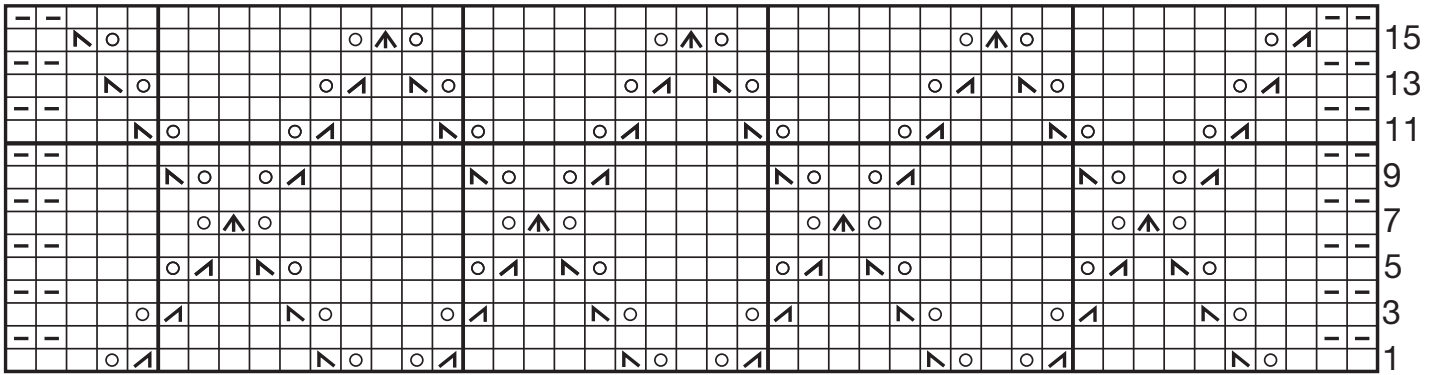
16th row: As 2nd row.

These 16 rows form Lace Pat.

Cont in Lace Pat until work from beg measures 8 ins [20.5 cm], ending with a WS row. Cast off.



CHART: BLOCK #6



Start Here

KEY

☐ = Knit on RS rows,
Purl on WS rows

☐ = Purl on RS rows,
Knit on WS rows

○ = yo

▣ = K2tog

▢ = ssk

▣ = S1. K2tog. pss.