



**MYSTERY AFGHAN
KNIT-ALONG**

CLUE #8

MEASUREMENTS

Approx 10 x 8 ins [25.5 x 20.5 cm].

MATERIALS

Bernat® Satin

(100 g/3.5 oz; 149 m/163 yds)

Contrast A (04007 Silk)

Contrast B (04010 Camel)

Contrast C (04615 Banana)

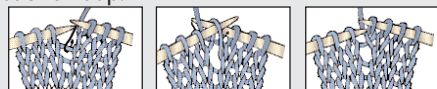
Size 5 mm (U.S. 8) knitting needles **or size needed to obtain gauge.** Cable needle.

STITCH GLOSSARY

K1tbl = Knit next stitch through back of loop.

P1tbl = Purl next stitch through back of loop.

M1 = Make 1 stitch by picking up horizontal loop lying before next stitch and knitting into back of loop.



MB = [(K1. P1) twice. K1] all in next stitch. 5 stitches made. **Turn.** P2tog. P1. P2tog. **Turn.** S1l. K2tog. pssso. 1 stitch remains. Bobble complete.

T5B = Slip next 3 stitches onto cable needle and leave at back of work. K2, then P1, K2 from cable needle.

T3B = Slip next stitch onto cable needle and leave at back of work. K2, then P1 from cable needle.

T3F = Slip next 2 stitches onto cable needle and leave at front of work. P1, then K2 from cable needle.

GAUGE

18 sts and 24 rows = 4 ins [10 cm] in stocking st.

INSTRUCTIONS

Make 1 Block each with A, B and C.

Cast on 46 sts.

Foundation row: (WS). K11. (M1. K4) 6 times. M1. K11. 53 sts.

1st row: (RS). (K1. P1) 4 times. K1tbl. P3. MB. P1. T3B. P7. T5B. P7. T3F. P1. MB. P3. K1tbl. (P1. K1) 4 times.

2nd row: K2. (P1. K1) 3 times. P1tbl. K5. P2. K8. P2. K1. P2. K8. P2. K5. P1tbl. (K1. P1) 3 times. K2.

3rd row: K2. (P1. K1) 3 times. K1tbl. P4. T3B. P7. T3B. K1. T3F. P7. T3F. P4. K1tbl. (K1. P1) 3 times. K2.

4th row: (K1. P1) 4 times. P1tbl. K4. P2. K8. P2. K1. P1. K1. P2. K8. P2. K4. P1tbl. (P1. K1) 4 times.

5th row: (K1. P1) 4 times. K1tbl. P3. T3B. P7. T3B. K1. P1. K1. T3F. P7. T3F. P3. K1tbl. (P1. K1) 4 times.

6th row: K2. (P1. K1) 3 times. P1tbl. K3. P2. K8. P2. (K1. P1) twice. K1. P2. K8. P2. K3. P1tbl. (K1. P1) 3 times. K2.

7th row: K2. (P1. K1) 3 times. K1tbl. P2. T3B. P7. T3B. (K1. P1) twice. K1. T3F. P7. T3F. P2. K1tbl. (K1. P1) 3 times. K2.

8th row: (K1. P1) 4 times. P1tbl. K2. P2. K8. P2. (K1. P1) 3 times. K1. P2. K8. P2. K2. P1tbl. (P1. K1) 4 times.

9th row: (K1. P1) 4 times. K1tbl. P2. T3F. P1. MB. P4. T3B. (K1. P1) 3 times. K1. T3F. P4. MB. P1. T3B. P2. K1tbl. (P1. K1) 4 times.

10th row: K2. (P1. K1) 3 times. P1tbl. K3. P2. K6. P2. (K1. P1) 4 times. K1. P2. K6. P2. K3. P1tbl. (K1. P1) 3 times. K2.

11th row: K2. (P1. K1) 3 times. K1tbl. P3. T3F. P4. T3B. (K1. P1) 4 times. K1. T3F. P4. T3B. P3. K1tbl. (K1. P1) 3 times. K2.

12th row: (K1. P1) 4 times. P1tbl. (K4. P2) twice. (K1. P1) 5 times. K1. (P2. K4) twice. P1tbl. (P1. K1) 4 times.

13th row: (K1. P1) 4 times. K1tbl. P4. T3F. P2. T3B. (K1. P1) 5 times. K1. T3F. P2. T3B. P4. K1tbl. (P1. K1) 4 times.

14th row: K2. (P1. K1) 3 times. P1tbl. K5. P2. K2. P2. (K1. P1) 6 times. K1. P2. K2. P2. K5. P1tbl. (K1. P1) 3 times. K2.

15th row: K2. (P1. K1) 3 times. K1tbl. P5. T3F. P7. K2. P1. K2. P7. T3B. P5. K1tbl. (K1. P1) 3 times. K2.

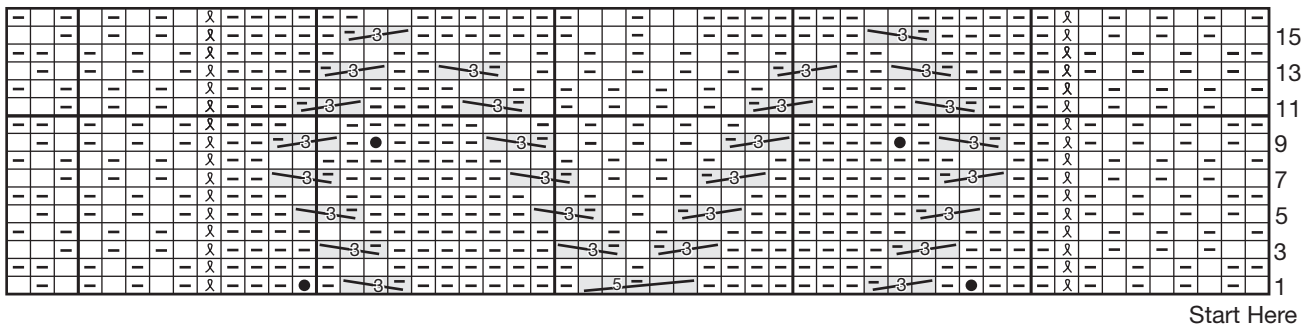
16th row: (K1. P1) 4 times. P1tbl. K6. P2. K7. P2. K1. P2. K7. P2. K6. P1tbl. (P1. K1) 4 times. Rep last 16 rows for Cable Pat twice more, then 1st row once.

Next row: (WS). K11. (K2tog. K3) 6 times. K2tog. K10. 46 sts. Cast off purlwise.



P.O. Box 40, Listowel ON N4W 3H3
"home style... life style... your style."

CHART: BLOCK #8



KEY

☐ = Knit on RS rows, Purl on WS rows

= T5B

= T3F

= K1tbl on RS rows
P1tbl on WS rows

= Purl on RS rows, Knit on WS rows

= T3B

● = MB