



**BERNAT BABY BOUCLÉ
KNIT DUCK BLANKET**

MEASUREMENTS: Approx 31 x 34 ins [78.5 x 86.5 cm].

MATERIALS

Bernat Baby Bouclé
(100 g/3.5 oz)

Main Color (MC) (Blue) **3 balls**
Contrast A (White) **3 balls**

Size 6 mm (U.S. 10) knitting needles **or size needed to obtain gauge.**

GAUGE: 13 sts and 20 rows = 4 ins [10 cm] in stocking st.

ABBREVIATIONS

www.bernat.com/glossary

INSTRUCTIONS

Note: When working with more than 2 colors, wind small balls of the colors to be used, one for each separate area of color in the design. Start new colors at appropriate points. To change colors, twist the two colors around each other where they meet, on WS, to avoid a hole.

Strip A (make 1)

**With MC cast on 24 sts.

Work 6 rows in stocking st. Work Chart in stocking st to end of chart, reading **knit** rows from **right** to left and **purl** rows from **left** to right. With MC, work 6 rows stocking st. **

Next row: (With A, K6. With MC, K6) twice.

Next row: (With MC, P6. With A, P6) twice.

These 2 rows form pat.

***Cont in pat until work from beg measures 24 ins [61 cm].

With MC work 6 rows in stocking st. Work Chart in stocking st to end of chart.

With MC work 6 rows in stocking st. Cast off. ***

Strip C (make 1)

Rep from ** to ** as given for Strip A.

Next row: (With MC, K6. With A, K6) twice.

Next row: (With A, P6. With MC, P6) twice.

These 2 rows form pat.

Work from ***to*** as given for Strip A.

Strip B (make 1)

With MC cast on 50 sts.

Work 8 rows in stocking st. With A, work 8 rows in stocking st.

Rep from *to* once.

With MC, cont in stocking st until work from beg measures 24 ins [61 cm].

With A, work 8 rows in stocking st. With MC rep from *to* once. With MC, work 8 rows in stocking st.

Cast off.

FINISHING

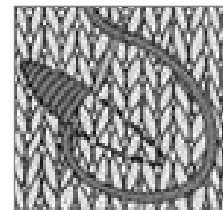
Join Strips as follows: A, B, C.

Edging: With RS of work facing and MC pick up and knit 73 sts across top of Blanket. Knit 10 rows. Cast off. Rep for bottom edge.

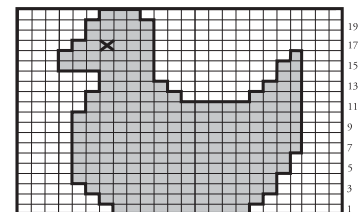
With RS of work facing and MC pick up and knit 124 sts along side of Blanket. Knit 10 rows. Cast off. Rep for other side.

Make Tassels: (Make 4) Cut a piece of cardboard 4½ ins [11.5 cm] wide. Wind MC around cardboard 25 times. Break yarn leaving a long end and thread end through a needle. Slip needle through all loops and tie tightly. Remove cardboard and wind yarn tightly around loops 1 inch [2 cm] below fold. Fasten securely. Cut through rem loops and trim ends evenly. Attach to corners of blanket. With MC embroider eye using satin stitch (see Diagram).

**SATIN STITCH
DIAGRAM**



CHART



Key
□ = Main Color (MC)
■ = Contrast A

