

**BERNAT BABY COORDINATES
CROCHET BABY BIB**

MATERIALS

Bernat Baby Coordinates

(160 g/5.6 oz)

Main Color (MC) 1 ball

Contrast A 1 ball

Size 4 mm (U.S. G or 6) crochet hook
or size needed to obtain gauge.

GAUGE

20 dc and 9 rows = 4 ins [10 cm].

STITCH GLOSSARY

Dc2tog = (Yoh and draw up a loop in next st. Yoh and draw through 2 loops on hook) twice. Yoh and draw through all loops on hook - *dc2tog made*.

ABBREVIATIONS

www.bernat.com/glossary.php

INSTRUCTIONS

FRONT: With MC, ch 33.

1st row: (RS). 1 dc in 4th ch from hook. 1 dc in each ch to end of ch. 31 dc.

2nd row: Ch 3. Miss first dc. 1 dc in each of next 6 dc. Ch 1. Miss next dc. 1 dc in each of next 15 dc. Ch 1. Miss next dc. 1 dc in each dc to end of row. Rows 1 and 2 of chart are complete.

Beg with row 3, work chart to end of chart reading **RS** rows from **right** to left and **WS** rows from **left** to right, noting each row ends with ch 3. Turn.

Next 2 rows: Miss first dc. 1 dc in each dc to end of row. Ch 3. Turn.

Shape neck: Next row: (RS). Miss first dc. 1 dc in each of next 6 dc. Dc2tog over next 2 dc. 1 dc in next dc (neck edge). Ch 3. **Turn.** Leave rem sts unworked.

Next row: Miss first dc. Dc2tog over next 2 dc. 1 dc in each dc to end of row. Ch 3. Turn.

Next row: Miss first dc. 1 dc in each of next 4 dc. Dc2tog over next 2 dc. 1 dc in next dc. Ch 3. Turn. 7 dc.

Work 3 rows even in dc omitting turning ch at end of last row. Fasten off.

With RS of work facing, miss next 11 dc. Join yarn with sl st to next dc. Ch 3.

Next row: Miss first dc. Dc2tog over next 2 dc. 1 dc in each of next 6 dc. 1 dc in next dc. Ch 3. Turn.

Next row: Miss first dc. 1 dc in each dc to last 3 dc. Dc2tog over next 2 dc. 1 dc in last dc. Ch 3. Turn.

Next row: Miss first dc. Dc2tog over next 2 dc. 1 dc in each of next 4 dc. 1 dc in next dc. Ch 3. Turn. 7 dc.

Work 3 rows even in dc omitting turning ch at end of last row. Fasten off.

BACK: Ch 33.

1st row: (RS). 1 dc in 4th ch from hook. 1 dc in each ch to end of ch. 31 dc. Ch 3. Turn.

2nd row: Miss first dc. 1 dc in each dc to end of row. Ch 3. Turn. Rep last row 14 times more omitting turning ch at end of last row (16 rows total).

Next row: Miss first dc. 1 dc in each of next 14 dc (back opening). Ch 3. **Turn.** Leave rem sts unworked.

Work 5 more rows in dc omitting turning ch at end of last row. Fasten off. With RS of work facing, miss next dc. Join yarn with sl st to next dc. Ch 3.

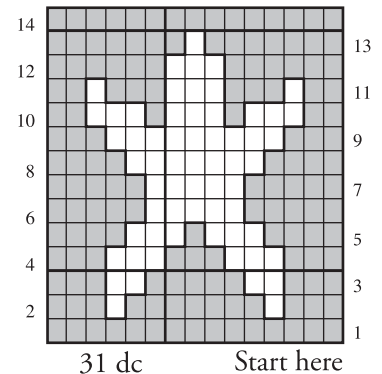
Next row: 1 dc in first dc and each dc to end of row. Ch 3. Turn.

Work 5 more rows in dc omitting turning ch at end of last row. Fasten off.

FINISHING: Sew shoulder seams. With RS of work facing, join yarn with sl st at bottom of back opening. Ch 1. Work sc evenly up back opening, around neck and down other side of back opening. Join with sl st to first sc. Fasten off.


Border: 1st rnd: With RS of work facing join A with sl st at center of Back. Ch 1. Work 14 sc to corner. Work 3 sc in corner. Work 87 sc evenly along side. Work 3 sc in next corner. Work 29 sc evenly across lower front edge. Work 3 sc in next corner. Work 87 sc evenly along side. Work 3 sc in next corner. Work 14 sc across to center back. Join with sl st to first sc. 243 sc.

2nd rnd: 1 sc in first st. *Miss next st. 5 dc in next st. Miss next st. 1 sc in next st. Rep from * to last 3 sc. Miss next st. 5 dc in next st. Miss next st. Join with sl st to first sc. Fasten off.



Key

 = 1 block (2 dc)

 = 1 space
(Ch 1, 1 dc)



P.O. Box 40 Listowel ON N4W 3H3

“home style... life style... your style.”