



CROCHET BLANKET

MEASUREMENTS: Approx 32 x 40 ins [81 x 102 cm].

MATERIALS

Bernat® Baby Coordinates

(160 g/5.6 oz)

Main Color (MC) (White) **2 balls**

Contrast A (Yellow) **1 ball**

Contrast B (Aqua) **1 ball**

Size 4 mm (U.S. G or 6) crochet hook **or size needed to obtain gauge.**

GAUGE: 1 square = 6 ins [15 cm].

ABBREVIATIONS

www.bernat.com/glossary

INSTRUCTIONS

STAR SQUARE (make 15). With MC, ch 33.

Foundation row: (RS). 1 dc in 4th ch from hook. 1 dc in each ch to end of ch. 31 dc.

2nd row: Ch 3. 1 dc in each of next 6 dc. Ch 1. Miss next dc. 1 dc in each of next 15 dc. Ch 1. Miss next dc. 1 dc in each dc to end of row. Rows 1 and 2 of chart are complete. Beg with row 3, work chart to end of chart reading **right** side rows from **right** to left and **wrong** side rows from **left** to right, noting each row ends with ch 3. Turn. Omit turning ch at end of last row. Fasten off.

PLAIN SQUARE (make 8 with A; make 7 with B). Ch 33.

Foundation row: (RS). 1 dc in 4th ch from hook. 1 dc in each ch to end of ch. 31 dc. Ch 3. Turn.

2nd row: Miss first dc. 1 dc in each dc to end of row. Ch 3. Turn. Rep last row 12 times more omitting turning ch at end of last row (14 rows total). Fasten off.

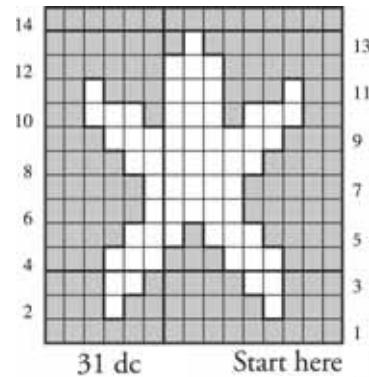
Following photo for placement, join squares into 5 strips, 6 squares long alternating Star Square with Plain Square A or B as shown.

Edging: 1st rnd: With RS of work facing and MC, join yarn with sl st in any corner. Ch 1. Work 1 rnd sc evenly around blanket working 3 sc in corner sc. Join with sl st to first sc. Fasten off.



2nd rnd: Join A with sl st in any corner sc of previous rnd. Ch 3. 1 dc in each sc around working 3 dc in corner sc. Sl st to top of ch 3. Fasten off.

3rd rnd: Join MC with sl st in any corner dc of previous rnd. Ch 1. 1 sc in each dc around working 3 sc in corner dc. Sl st to first sc. Fasten off.

4th rnd: Join B with sl st in any corner sc of previous rnd. Ch 3. 1 dc in each sc around working 3 dc in corner sc. Sl st to top of ch 3. Fasten off.



Key

-  = 1 block (2 dc)
-  = 1 space (Ch 1, 1 dc)



P.O. Box 40 Listowel ON N4W 3H3
"home style... life style... your style."