



**BERNAT® DENIMSTYLE
HIS AND HER ARAN KNITS
(TO KNIT)**

SIZES

Her Version

Bust measurement

Extra-Small	32	ins	[81.5	cm]
Small	34	"	[86.5	"]
Medium	36	"	[91.5	"]
Large	38	"	[96.5	"]
Extra-Large	40	"	[101.5	"]
2 Extra-Large	42	"	[106.5	"]

Finished bust

Extra-Small	36	ins	[91.5	cm]
Small	38	"	[96.5	"]
Medium	40	"	[101.5	"]
Large	43	"	[109	"]
Extra-Large	45	"	[114.5	"]
2 Extra-Large	47½	"	[120.5	"]

His Version

Chest measurement

Extra-Small	34	ins	[86.5	cm]
Small	36	"	[91.5	"]
Medium	38	"	[96.5	"]
Large	40	"	[101.5	"]
Extra-Large	42	"	[106.5	"]
2 Extra-Large	44	"	[112	"]

Finished chest

Extra-Small	38	ins	[96.5	cm]
Small	41½	"	[105.5	"]
Medium	44	"	[112	"]
Large	46	"	[117	"]
Extra-Large	48	"	[122	"]
2 Extra-Large	50	"	[127	"]

MATERIALS

Bernat® Denimstyle (100 g)
Sizes XS (S-M-L-XL-2XL)

Her Version
6 (6-7-7-8-9) balls

His Version
7 (8-8- 9-9-10) balls

Sizes 4.5 mm (U.S. 7) and 5 mm (U.S. 8) knitting needles **or size needed to obtain gauge**. 2 st holders. Cable needle.

GAUGE

18 sts and 24 rows = 4 ins [10 cm] in stocking st with larger needles.

ABBREVIATIONS

C4F = slip next 2 sts onto a cable needle and leave at front of work. K2, then K2 from cable needle.

C4B = slip next 2 sts onto a cable needle and leave at back of work. K2, then K2 from cable needle.

C6F = slip next 3 sts onto a cable needle and leave at front of work. K3, then K3 from cable needle.

C6B = slip next 3 sts onto a cable needle and leave at back of work. K3, then K3 from cable needle.

T4F = slip next 3 sts onto a cable needle and leave at front of work. P1, then K3 from cable needle.

T4B = slip next st onto a cable needle and leave at back of work. K3, then P1 from cable needle.

INSTRUCTIONS

The instructions are written for smallest size. If changes are necessary for larger sizes the instructions will be written thus ().

Panel Pat A (worked over 24 sts.)

1st row: (RS). P2. C6F. P8. C6F. P2.

2nd and alt rows: Knit all knit sts and purl all purl sts as they appear.

3rd and 5th rows: P2. K6. P8. K6. P2.

7th row: As 1st row.

9th row: P1. T4B. T4F. P6. T4B. T4F. P1.

11th row: T4B. P2. T4F. P4. T4B. P2. T4F.

13th row: K3. P4. T4F. P2. T4B. P4. K3.

15th row: T4F. P4. T4F. T4B. P4. T4B.

17th row: P1. T4F. P4. C6B. P4. T4B. P1.

19th row: P2. (T4F. P2. T4B) twice. P2.

21st row: P3. (T4F. T4B. P2) twice. P1.

23rd row: P4. (C6F. P4) twice.

25th row: P3. (T4B. T4F. P2) twice. P1.

27th row: P2. (T4B. P2. T4F) twice. P2.

29th row: P1. T4B. P4. C6B. P4. T4F. P1.

31st row: T4B. P4. T4B. T4F. P4. T4F.

33rd row: K3. P4. T4B. P2. T4F. P4. K3.

35th row: T4F. P2. T4B. P4. T4F. P2. T4B.

37th row: P1. T4F. T4B. P6. T4F. T4B. P1.

38th row: As 2nd row.

These 38 rows form Panel Pat A.

Panel Pat B (worked over 4 sts.)

1st row: (RS). C4B.

2nd and alt rows: P4.

3rd and 5th rows: K4.

6th row: As 2nd row.

These 6 rows form Panel Pat B.

Panel Pat C (worked over 4 sts.)

1st row: (RS). C4F.

2nd and alt rows: P4.

3rd and 5th rows: K4.

6th row: As 2nd row.

These 6 rows form Panel Pat C.

Panel Pat D (worked over 24 sts.)

1st row: (RS). T4B. P2. T4F. P4. T4B. P2. T4F.

2nd and alt rows: Knit all knit sts and purl all purl sts as they appear.

3rd row: K3. P4. T4F. P2. T4B. P4. K3.

5th row: T4F. P4. T4F. T4B. P4. T4B.

7th row: P1. T4F. P4. C6B. P4. T4B. P1.

9th row: P2. (T4F. P2. T4B) twice. P2.

11th row: P3. (T4F. T4B. P2) twice. P1.

13th row: P4. (C6F. P4) twice.

15th row: P3. (T4B. T4F. P2) twice. P1.

17th row: P2. (T4B. P2. T4F) twice. P2.

19th row: P1. T4B. P4. C6B. P4. T4F. P1.

21st row: T4B. P4. T4B. T4F. P4. T4F.

23rd row: K3. P4. T4B. P2. T4F. P4. K3.

25th row: T4F. P2. T4B. P4. T4F. P2. T4B.

27th row: P1. T4F. T4B. P6. T4F. T4B. P1.

29th row: P2. C6F. P8. C6F. P2.

31st and 33rd rows: P2. K6. P8. K6. P2.

35th row: As 29th row.

37th row: P1. T4B. T4F. P6. T4B. T4F. P1.

38th row: As 2nd row.

These 38 rows form Panel Pat D.



Her Version

BACK

**With smaller needles, cast on

78 (82-86-94-98-102) sts.

1st row: (RS). K2. *P2. K2. Rep from * to end of row.

2nd row: P2. *K2. P2. Rep from * to end of row.**

Rep last 2 rows of (K2. P2) ribbing 8 times more, ending with RS facing for next row and inc 3 (3-5-3-3-5) sts evenly across last row.

81 (85-91-97-101-107) sts.

Change to larger needles and proceed in stocking st until work from beg measures 15 (15-16-16-16½-16½) ins [38 (38-40.5-40.5-42-42) cm], ending with RS facing for next row.

Armhole shaping: Cast off 5 (6-7-8-8-8) sts beg next 2 rows. 71 (73-77-81-85-91) sts.

Next row: (RS). K2. S11K. K1. pss. Knit to last 4 sts. K2tog. K2.

Work 1 row even.

Rep last 2 rows 5 (5-6-7-7-8) times more.

59 (61-63-65-69-73) sts.

Cont even until armhole measures 7 (7-7½-8½-9-9½) ins [18 (18-19-21.5-23-24) cm], ending with RS facing for next row.

Shape back neck and shoulders: **Next row:** K15 (16-16-17-18-19) (neck edge). **Turn.** Leave rem sts on a spare needle.

Next row: P2tog. Purl to end of row.

Next row: Cast off 6 (6-6-7-7-8) sts. Knit to last 2 sts. K2tog.

Next row: P2tog. Purl to end of row. Cast off rem 6 (7-7-7-8-8) sts.

With RS of work facing slip next 29 (29-31-31-33-35) sts from spare needle onto a st holder. Join yarn to rem sts and knit to end of row.

Next row: Purl to last 2 sts. P2tog.

Next row: K2tog. Knit to end of row.

Next row: Cast off 6 (6-6-7-7-8) sts. Purl to last 2 sts. P2tog.

Next row: Knit. Cast off rem 6 (7-7-7-8-8) sts.

FRONT

Work from ** to ** as given for Back.

Rep last 2 rows of (K2. P2) ribbing 7 times more, then 1st row once.

Next row: (WS). (Inc 1 st in first st purlways) 0 (1-1-0-1-1) time(s). Rib 21 (22-24-29-30-32) sts.

(Inc 1 st in next st purlways. P2) 12 times. Rib to last 2 sts. (Inc 1 st in next st purlways) 0 (1-1-0-1-1) time(s). P1. 90 (96-100-106-112-116) sts.

Change to larger needles and proceed as follows:

Foundation row: (RS). K31 (34-36-39-42-44). P4. K6. P8. K6. P4. Knit to end of row.

Next row: Knit all knit sts and purl all purl sts as they appear.

Proceed in pat as follows:

1st row: (RS). K27 (30-32-35-38-40) sts. Work 1st row of Panel Pat B. P2. Work 1st row of Panel Pat A. P2. Work 1st row of Panel Pat C. Knit to end of row.

2nd row: P27 (30-32-35-38-40). Work 2nd row of Panel Pat C. K2. Work 2nd row of Panel Pat A. K2. Work 2nd row of Panel Pat B. Purl to end of row.

Panel Pats A, B and C are now in position.

Cont even in pat, keeping cont of Panel Pats until work from beg measures 15 (15-16-16-16½-16½) ins [38 (38-40.5-40.5-42-42) cm], ending with RS facing for next row.

Armhole shaping: Keeping cont of pat, cast off 5 (6-7-8-8-8) sts beg next 2 rows. 80 (84-86-90-96-100) sts.

Next row: K2. Sl1K. K1. pssso. Pat to last 4 sts. K2tog. K2.

Work 1 row even in pat.

Rep last 2 rows 5 (5-6-7-7-8) times more.

68 (72-72-74-80-82) sts.

Cont even in pat until armhole measures 3½ (3½-4-4½-5-5½) ins [9 (9-10-11.5-12.5-14) cm], ending with RS facing for next row.

Shape neck: **Next row:** Pat across 21 (23-23-24-26-27) sts (neck edge). **Turn.** Leave rem sts on a spare needle.

Dec 1 st at neck edge on next 4 rows, then on following alt rows until there are 12 (13-13-14-15-16) sts.

Cont even in pat until work from beg measures same length as Back to beg of shoulder shaping, ending with RS facing for next row.

Shoulder shaping: Cast off 6 (6-6-7-7-8) sts beg next row. Work 1 row even. Cast off rem 6 (7-7-7-8-8) sts.

With RS of work facing, slip next 26 (26-26-26-28-28) sts onto a st holder. Join yarn to rem sts and pat to end of row.

Dec 1 st at neck edge on next 4 rows, then on following alt rows until there are 12 (13-13-14-15-16) sts.

Cont even in pat until work from beg measures same length as Back to beg of shoulder shaping, ending with WS facing for next row.

Shoulder shaping: Cast off 6 (6-6-7-7-8) sts beg next row. Work 1 row even. Cast off rem 6 (7-7-7-8-8) sts.

SLEEVES

With smaller needles, cast on 34 (34-34-42-42-42) sts.

Work in (K2. P2) ribbing as given for Back for 18 rows, inc 6 (6-6-4-4-6) sts evenly across last row. 40 (40-40-46-46-48) sts.

Change to larger needles and proceed in stocking st, inc 1 st each end of needle on next and following 8th (8th-6th-6th-6th-6th) rows until there are 58 (58-62-64-68-70) sts.

Cont even until Sleeve from beg measures 17 (17-18-19-19-19) ins [43 (43-45.5-48-48-48) cm], ending with RS facing for next row.

Shape top: Cast off 3 (3-4-4-4-5) sts beg next 2 rows. 52 (52-54-56-60-60) sts.

Next row: (RS). K2. Sl1K. K1. pssso. Knit to last 4 sts. K2tog. K2.

Next row: Purl.

Rep last 2 rows until there are 34 (34-34-28-28-24) sts.

Next row: (RS). K2. Sl1K. K1. pssso. Knit to last 4 sts. K2tog. K2.

Next row: P2. P2tog. Purl to last 4 sts. P2togtbl. P2.

Rep last 2 rows until there are 10 (10-10-12-12-12) sts. Cast off.

FINISHING

Collar: Sew right shoulder seam. With RS of work facing and smaller needles, pick up and knit 20 (20-20-22-22-22) sts down left front neck edge. Pat across 26 (26-26-26-28-28) sts from front st holder, dec 7 (7-5-5-5-7) sts evenly across. Pick up and knit 20 (20-20-22-22-22) sts up right front

neck edge and 3 sts down back right neck edge. K29 (29-31-31-33-35) from back st holder. Pick up and knit 3 sts up back left neck edge. 94 (94-98-102-106-106) sts.

Beg with a 2nd row, work in (K2. P2) ribbing as given for Back for 3 ins [7.5 cm]. Change to larger needles and cont in ribbing until Collar from pick up row measures 7 ins [18 cm], ending with RS facing for next row. Cast off in ribbing.

Sew left shoulder and Collar seam reversing for turn back. Sew in sleeves. Sew side and sleeve seams.



His Version

BACK

***With smaller needles, cast on 86 (94-98-102-110-114) sts.

1st row: (RS). K2. *P2. K2. Rep from * to end of row.

2nd row: P2. *K2. P2. Rep from * to end of row.

Rep last 2 rows of (K2. P2) ribbing 5 times more, then 1st row once.

Next row: (WS). (Inc 1 st in next st) 3 (5-7-7-5-5) times. (Inc 1 st in next st. K1) 40 (42-42-44-50-52) times. (Inc 1 st in next st) 3 (5-7-7-5-5) times. 132 (146-154-160-170-176) sts.

Change to larger needles and proceed in pat as follows:

1st row: (RS). P6 (1-5-8-1-4). (Work 1st row of Panel Pat A. Work 1st row of Panel Pat D) 2 (3-3-3-3-3) times. (Work 1st row of Panel Pat A) 1 (0-0-0-1-1) time. P6 (1-5-8-1-4).

2nd row: K6 (1-5-8-1-4). (Work 2nd row of Panel Pat A) 1 (0-0-0-1-1) time(s). (Work 2nd row of Panel Pat D. Work 2nd row of Panel Pat A) 2 (3-3-3-3-3) times. K6 (1-5-8-1-4).

Panel Pats A and D are now in position.

Cont in pat, keeping cont of Panel Pats A and D until work from beg measures 15½ (16½-16½-17-17½-17½) ins [39.5 (42-42-43-44.5-44.5) cm], ending with RS facing for next row.

Armhole shaping: Cast off 16 (11-15-18-11-14) sts beg next 2 rows. 100 (124-124-124-148-148) sts.***

Cont even in pat until armhole measures 8½ (8½-9-9½-9½-10) ins [21.5 (21.5-23-24-24-25.5) cm], ending with RS facing for next row.

Shape back neck and shoulders: **Next row:** Pat across 28 (39-39-39-49-49) sts (neck edge). **Turn.** Leave rem sts on a spare needle.

Next row: P2tog. Pat to end of row.

Next row: Cast off 13 (18-18-18-23-23) sts. Pat to last 2 sts. K2tog.

Next row: P2tog. Pat to end of row. Cast off rem 12 (18-18-18-23-23) sts.

With RS of work facing, slip next 44 (46-46-46-50-50) sts from spare needle onto a st holder. Join yarn to rem sts and pat to end of row.

Next row: Pat to last 2 sts. P2tog.

Next row: K2tog. Pat to end of row.

Next row: Cast off 13 (18-18-18-23-23) sts. Pat to last 2 sts. P2tog.

Next row: Work even in pat.

Cast off rem 12 (18-18-18-23-23) sts.

FRONT

Work from *** to *** as given for Back.

Cont even in pat until armhole measures

5 (5-5½-5½-6-6½) ins [12.5 (12.5-14-14-15-16.5) cm], ending with RS facing for next row.

Shape neck: Next row: Pat across 37 (48-48-48-58-58) sts (neck edge). **Turn.** Leave rem sts on a spare needle.

Dec 1 st at neck edge on next 8 rows, then on following alt rows until there are 25 (36-36-36-46-46) sts.

Cont even in pat until work from beg measures same length as Back to beg of shoulder shaping, ending with RS facing for next row.

Shoulder shaping: Cast off 13 (18-18-18-23-23) sts beg next row. Work 1 row even. Cast off rem 12 (18-18-18-23-23) sts.

With RS of work facing, slip next 26 (28-28-28-32-32) sts onto a st holder. Join yarn to rem sts and pat to end of row.

Dec 1 st at neck edge on next 8 rows, then on following alt rows until there are 25 (36-36-36-46-46) sts.

Cont even in pat until work from beg measures same length as Back to beg of shoulder shaping, ending with WS facing for next row.

Shoulder shaping: Cast off 13 (18-18-18-23-23) sts beg next row. Work 1 row even. Cast off rem 12 (18-18-18-23-23) sts.

SLEEVES

With smaller needles, cast on 46 (46-46-50-50-50) sts.

Work 12 rows in (K2. P2) ribbing, as given for Back, ending with RS facing for next row and inc 6 sts evenly across last row. 52 (52-52-56-56-56) sts.

Change to larger needles and work in reverse stocking st, inc 1 st each end of needle on next and every following 8th row to 76 (76-80-80-84-86) sts.

Cont even until work from beg measures 19 (19-20-20-21-21) ins [48 (48-51-51-53.5-53.5) cm], ending with RS facing for next row. Place markers 2 (1½-2-1-1½-2) ins [5 (4-5-2.5-4-5) cm] on side edges down from last row.

Shape top: Cast off 6 sts beg next 8 rows. Cast off rem 28 (28-32-32-36-38) sts.

Neckband: Sew right shoulder seam. With RS of work facing and smaller needles, pick up and knit

20 (20-20-22-22-22) sts down left front neck edge. K26 (28-28-28-32-32) from front st holder, dec 10 sts evenly across. Pick up and knit 20 (20-20-22-22-22) sts up right front neck edge and 3 sts down back right neck edge. K44 (46-46-46-50-50) from back st holder, dec 12 sts evenly across. Pick up and knit 3 sts up back left neck edge. 94 (98-98-102-110-110) sts.

Beg with a 2nd row, work in (K2. P2) ribbing as given for back for 1¼ ins [3 cm], ending with RS facing for next row. Cast off in ribbing.

Sew left shoulder and neckband seam. Sew in sleeves placing rows above markers along cast off sts at Back and Front to form square armholes. Sew side and sleeve seams.

Key

☐ = Knit on RS and purl on WS

▬ = Purl on RS and knit on WS

= C4F

= C4B

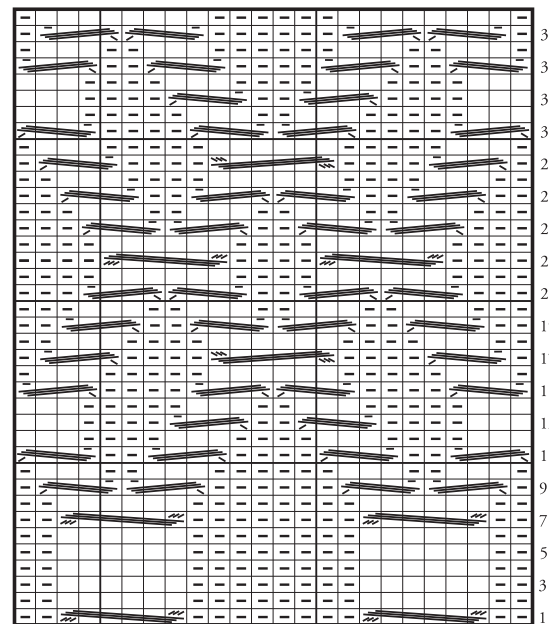
= T4F

= T4B

= C6F

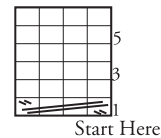
= C6B

Panel Pat A

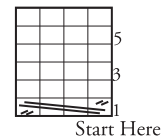


Start Here

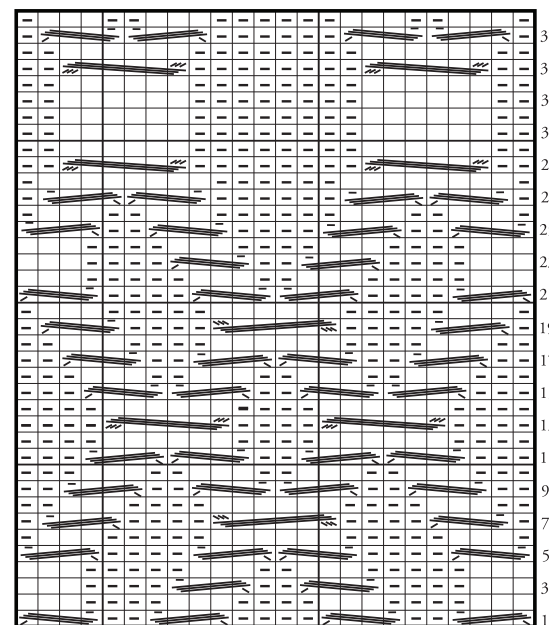
Panel Pat B



Panel Pat C



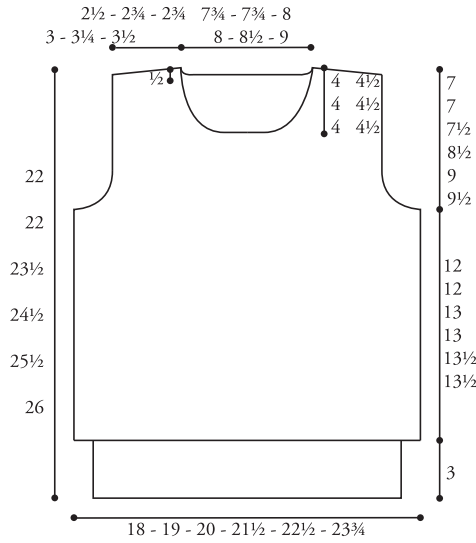
Panel Pat D



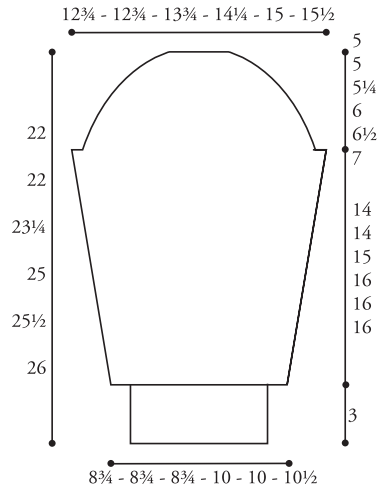
Start Here

HER VERSION

Front and Back

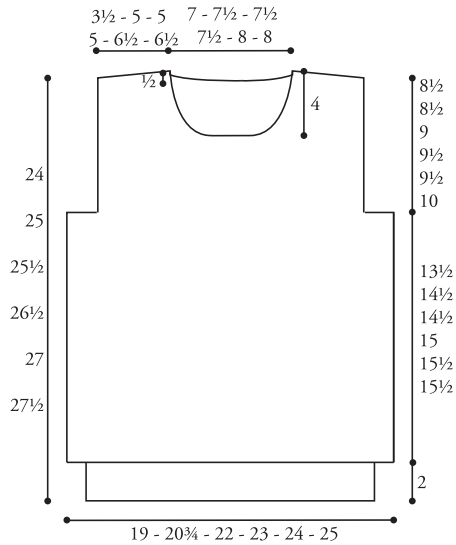


Sleeve

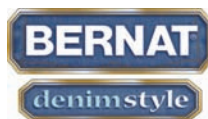
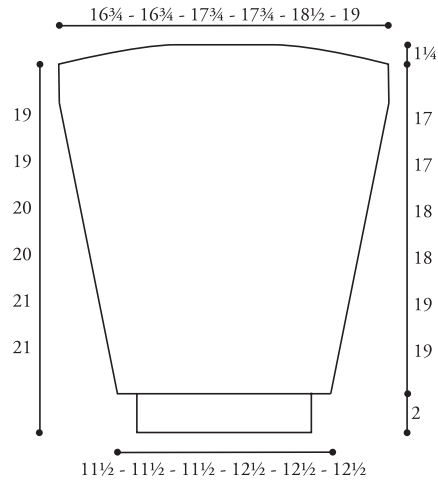


HIS VERSION

Front and Back



Sleeve



P.O. Box 40, Listowel ON N4W 3H3
 "home style... life style... your style."