



**BERNAT® HANDICRAFTER
CROCHET COTTON
BLOCKS-IN-BLOCKS CURTAINS
(TO CROCHET)**

MEASUREMENTS

22½ x 41½ ins [57 x 105.5 cm] (excluding tabs).

MATERIALS

**Bernat® Handicrafter®
Crochet Cotton** (400 g / 14 oz)
(00500 White) **2 balls** makes 3 panels.

Size 1.80 mm (U.S. 6) steel crochet hook **or size
needed to obtain gauge.**

GAUGE: 33 dc and 15 rows = 4 ins [10 cm]

ABBREVIATIONS

www.bernat.com/glossary

INSTRUCTIONS: Ch 200.

1st row: 1 dc in 4th ch from hook. 1 dc in each of next 31 ch. *(Ch 2. Miss next 2 ch. 1 dc in next ch) 11 times**. 1 dc in each of next 33 ch. Rep from * to end of chain, ending at **. 198 sts.

Work 2nd to 22nd rows of Chart, reading **RS** rows from **right** to left and **WS** rows from **left** to right. Rep 1st to 22nd rows of Chart 6 times more, then 1st to 11th rows once. **Do not** fasten off.

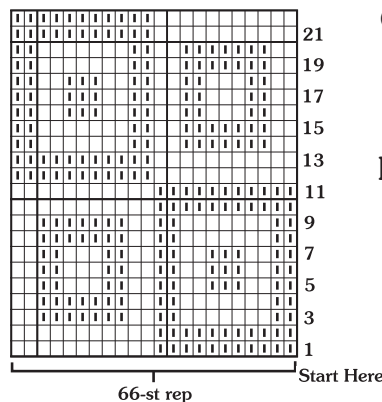
Edging: Ch 1. Work in sc evenly around outer edge of curtain, having 2 sc in corners. Join with sl st to first sc. Fasten off.

First Tab: 1st row: With RS facing, join yarn with sl st in first sc in top corner of curtain. **Ch 3 (counts as dc). 1 dc in each of next 15 sc. Turn. 16 dc.

2nd row: Ch 3 (counts as dc). 1 dc in each dc to end of row. Turn.



Rep last row until tab measures 3 ins [7.5 cm]. Fasten off.**

Second to Fifth Tabs: With RS of work facing, miss next 21 sc. Join yarn with sl st to next sc. Rep from ** to ** as given for First Tab.



Chart

Key

-  = 3 dc
-  = 1 dc. Ch 2.



Crochet Cotton

P.O. Box 40 Listowel ON N4W 3H3
"home style... life style... your style."