



**BERNAT® GLOW IN THE DARK
BOO BAG (TO KNIT)**

MEASUREMENTS

Approx 11 x 12 ins [28 x 30.5 cm] (excluding handles).

MATERIALS

Bernat® Worsted (200 g / 7 oz)
115 g / 4 oz of Black as **MC**.

Bernat® Glow in the Dark (40 g / 1.4 oz)
1 ball of (#22005 Glow Worm White) as **A**.

Size 5 mm (U.S. 8) knitting needles **or size needed to obtain gauge**.

GAUGE: 18 sts and 24 rows = 4 ins [10 cm] in stocking st.

ABBREVIATIONS

www.bernat.com/glossary

INSTRUCTIONS

FRONT

With MC, cast on 50 sts.

Beg with a knit row, work in stocking st until piece measures 5 ins [12.5 cm], ending with a purl row.

Place chart: **Next row:** K6. Knit 1st row of Chart across next 38 sts reading row from **right** to left. K6.

2nd row: P6. Purl 2nd row of Chart across next 38 sts reading from **left** to right. P6.

Chart is now in position. Cont working in Chart to end of chart. Break A.

With MC, cont in stocking st until piece measures 11½ ins [29 cm], ending with a knit row.

Knit 4 rows (garter st). Cast off knitwise (WS).

BACK

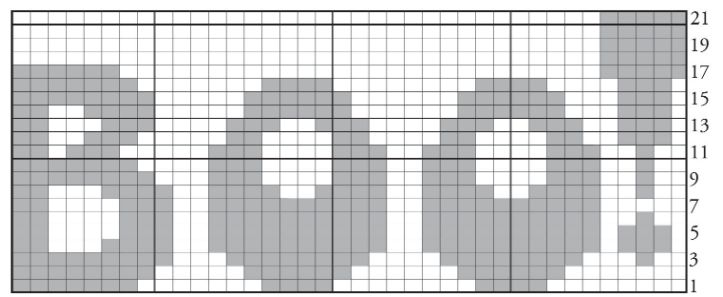
Work as given for Front omitting all references to Chart.

STRAPS (make 2). (worked lengthwise).

With MC, cast on 80 sts. Knit 6 rows. Cast off knitwise.

FINISHING: With WS facing each other, sew sides and bottom of Bag tog. Sew handles in position.

Chart



Key

□ = MC

■ = Contrast



P.O. Box 40 Listowel ON N4W 3H3
"home style... life style... your style."