



## BABY BLOCKS

### MATERIALS

**Note:** With 1 ball of **Bernat Cottontots** (Solids: 100 g/3.5 oz), you can make 2 Large Blocks or 3 Small Blocks; With 1 ball of **Bernat Cottontots** (Ombres: 85 g/3 oz), you can make 1 Large Block or 2 Small Blocks.

**Bernat Cottontots** (Solids: 100 g /3.5 oz; Ombres: 85 g/3 oz)

### Stripey Blocks

#### Main Color (MC)

(90005 Wonder White) **1 ball**

#### Contrast A

(90420 Pretty in Pink) **1 ball**

#### Contrast B

(90421 Strawberry) **1 ball**

Size 3.5 mm (U.S. E or 4) crochet hook **or size needed to obtain gauge.** Stuffing.

### GAUGE

16 sc and 20 rows = 4 ins [10 cm].

### ABBREVIATIONS

[www.bernat.com/glossary.php](http://www.bernat.com/glossary.php)

### INSTRUCTIONS

**Note:** When working from charts, wind small balls of the colors to be used, one for each separate area of color in the design. Start new color at appropriate points. To change colors, draw new color through last 2 loops on hook to complete a st, then proceed.

### LARGE STRIPEY BLOCKS

With B, ch 14. With MC, ch 15.  
With B, ch 17.

**1st row:** (RS). With B, 1 sc in 2nd ch from hook. 1 sc in each of next 14 ch. With MC, 1 sc in each of next 15 ch. With B, 1 sc in each of next 15 ch. Ch 1. Turn. 45 sc.

1st row of Chart is completed.

Cont in Chart, reading **RS** rows from **right** to left and **WS** rows from **left** to right, until 18th row of Chart is completed. Break yarn.

**Next row:** (RS). Miss first 15 sc. Join B with sl st to next sc. Ch 1. 1 sc in same sp as last sl st. Work 19th row of Chart across next 14 sts.

Cont in Chart to end of chart. Fasten off.

With MC and RS facing, crochet sides tog to form a cube, leaving one side open for stuffing. Stuff Block into cube shape. Crochet opening closed.

### SMALL BLOCKS

With A, ch 10. With MC, ch 11.  
With A, ch 13.

**1st row:** (RS). With A, 1 sc in 2nd ch from hook. 1 sc in each of next 10 ch. With MC, 1 sc in each of next 11 ch. With A, 1 sc in each of next 11 ch. Ch 1. Turn. 33 sc.

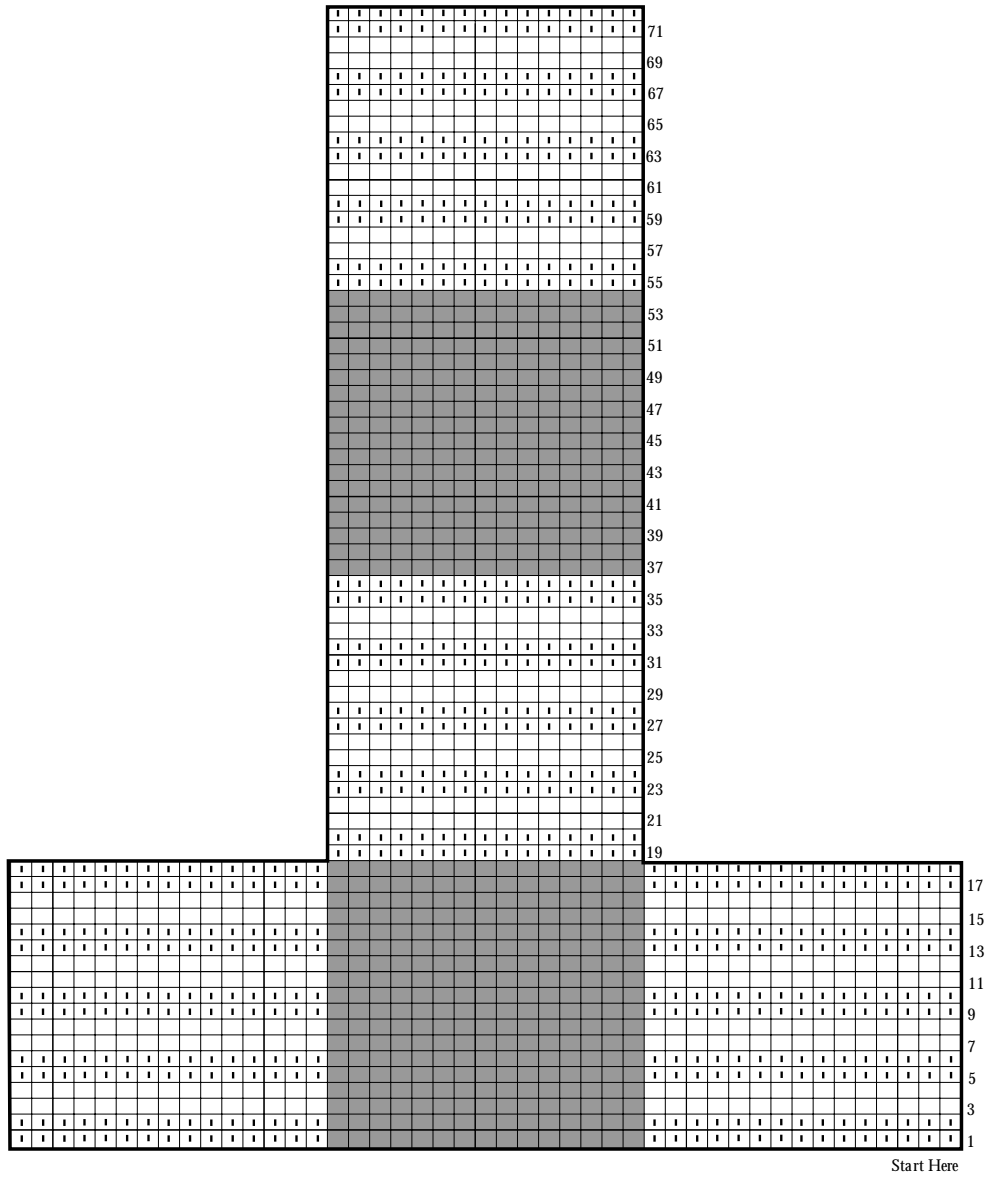
**2nd row:** With A, 1 sc in each of next 11 sc. With MC, 1 sc in each of next 11 sc. With A, 1 sc in each of next 11 sc. Ch 1. Turn.

Rep last row 10 times more. Fasten off.

With RS of work facing, miss first 11 sc. Join A with sl st to next sc. Ch 1. 1 sc in same sp as last sl st. 1 sc in each of next 10 sc. Turn. With A, work 11 rows even in sc, joining MC at end of last row. With MC, work 12 rows even in sc, joining A at end of last row. With A, work 12 rows even in sc. Fasten off.

With B and RS facing, crochet sides tog to form a cube, leaving one side open for stuffing. Stuff Block into a cube shape. Crochet opening closed.

# CHART



Key

= MC

= Contrast A

= Contrast B



P.O. Box 40 Listowel ON N4W 3H3

“home style... life style... your style.”