

6. His & Her Fair Isle Cardigans



SIZES

To fit chest / bust measurement	
Extra-Small / Small	
28-34 ins	[71-86.5 cm]
Medium	
36-38 ins	[91.5-96.5 cm]
Large	
40-42 ins	[101.5-106.5 cm]
Extra-Large	
44-46 ins	[112-117 cm]
2/3 Extra-Large	
48-54 ins	[122-137 cm]
4/5 Extra-Large	
56-62 ins	[142-157.5 cm]

Finished chest / bust	
Extra-Small / Small	36 ins [91.5 cm]
Medium	40 ins [101.5 cm]
Large	44 ins [112 cm]
Extra-Large	48 ins [122 cm]
2/3 Extra-Large	56 ins [142 cm]
4/5 Extra-Large	64 ins [162.5 cm]

GAUGE

18 sts and 24 rows = 4 ins [10 cm] with larger needles in stocking st.



ABBREVIATIONS

See page 54 for Helpful Hints.

Alt = Alternate(ing).

Beg = Beginning.

Cont = Continue(ity).

Dec = Decrease(ing).

Inc = Increase 1 stitch by knitting into front and back of next stitch.

K = Knit.

K2tog = Knit next 2 stitches together.

P = Purl.

Rem = Remaining.

Rep = Repeat.

RS = Right side.

Ssk = Slip next 2 stitches knitwise one at a time, then knit through back loops together.

St(s) = Stitch(es).

WS = Wrong side.

Yo = Yarn over.

INSTRUCTIONS

The instructions are written for smallest size. If changes are necessary for larger sizes the instructions will be written thus (). Numbers for each size are shown in the same color throughout the pattern. When only one number is given in black, it applies to all sizes.








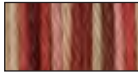
then



MATERIALS

Bernat® Super Value

(Solids 197 g/7 oz; 389 m/426 yds, Ombres 142 g/5 oz; 251 m/275 yds)

Sizes XS/S (M-L-XL-2/3XL-4/5XL)			
 <p>His Version</p>	<p>Main Color (MC) 53041 Clay 3 (3-3-4-4-4) balls</p> 	<p>Contrast A 28813 Techno Ombre 1 (1-1-1-1-1) ball</p> 	<p>Contrast B 53133 Cobalt 1 (1-1-1-1-1) ball</p> 
	Sizes XS/S (M-L-XL-2/3XL-4/5XL)		
 <p>Her Version</p>	<p>Main Color (MC) 53514 Topaz 3 (3-3-4-4-4) balls</p> 	<p>Contrast A 53531 Rouge 1 (1-1-1-1-1) ball</p> 	<p>Contrast B 28821 Rustic Rodeo 1 (1-1-1-1-1) ball</p> 

Sizes 4.5 mm (U.S. 7) and 5 mm (U.S. 8) knitting needles **or size needed to obtain gauge**. 2 st holders. **His Version:** Separating zipper. **Her Version:** 6 buttons.

... and now



Note: When working from charts, carry yarn not in use loosely across WS of work but never over more than 5 sts. When it must pass over more than 5 sts, weave it over and under color in use on next st at center point of sts it passes over. The colors are never twisted around one another.

BACK

With MC and smaller needles, cast on **78** (86-94-102-118-136) sts.

1st row: K2. *P2. K2. Rep from * to end of row.

2nd row: P2. *K2. P2. Rep from * to end of row.

Rep last 2 rows of (K2. P2) ribbing until work from beg measures 2 ins [5 cm], ending with a 2nd row and inc **4** (4-6-6-8-8) sts evenly across last row. **82** (90-100-108-126-144) sts.

Change to larger needles and work in Chart VII to end of chart, reading **knit** rows from **right** to left and **purl** rows from **left** to right, noting 10-st rep will be worked **8** (9-10-10-12-14) times.

Chart VII is shown on page 42.

With MC, cont in stocking st until work from beg measures 16 ins [40.5 cm], ending with a purl row.

Work 1st to 4th rows of Chart **X** (X-X-XI-XI-XI) in stocking st, reading **knit** rows from **right** to left and **purl** rows from **left** to right.

Chart X is shown on page 44.

Charts XI is shown on pages 42 and 43.

Shape raglans: Keeping cont of chart, cast off **4** (4-5-6-7-8) sts beg next 2 rows. **74** (82-90-96-112-128) sts.

Cont in Chart X or XI, noting raglan decs on every following 4th row **2** (1-0-0-0-0) time(s), then every following alt row until there are **32** (34-38-44-66-94) sts, then next **0** (0-1-3-13-27) row(s).

Cast off rem **32** (34-36-38-40-40) sts.

Pocket Linings (make 2).

With MC and smaller needles, cast on 27 sts. Proceed in stocking st until work from beg measures 5 ins [12.5 cm], ending with a purl row.

Leave sts on a st holder.

LEFT FRONT

With MC and smaller needles, cast on **38 (42-46-50-58-66) sts.

Work 2 ins [5 cm] in (K2. P2) ribbing as given for Back ending with a 2nd row and inc **3** (3-4-4-5-6) sts evenly across last row. **41** (45-50-54-63-72) sts.**

Change to larger needles and work Chart VIII to end of chart, reading **knit** rows from **right** to left and **purl** rows from **left** to right, noting 10-st rep will be worked **4** (4-5-5-6-7) times.

Chart VIII is shown on page 43.

With MC, cont in stocking st until work from beg measures 6 ins [15 cm], ending with a purl row.

Place pocket: Next row: K10 (14-18-20-26-33). K27 from st holder. Slip next 27 sts on a st holder. K4 (4-5-7-10-12).

Beg with a purl row, cont in stocking st until work from beg measures 16 ins [40.5 cm], ending with a purl row.

Work 1st to 4th rows of Chart X (X-X-XI-XI-XI) in stocking st.

Shape raglan: Keeping cont of chart, cast off 4 (4-5-6-7-8) sts beg of next row. 37 (41-45-48-56-64) sts.

Cont in Chart X or XI, noting raglan decs on every following 4th row 2 (1-0-0-0-0) time(s), then every following alt row until there are 22 (25-28-28-34-47) sts, then next 0 (0-0-0-0-13) rows, ending with 40th (44th-46th-46th-50th-52nd) row.

Cont in chart, noting neck shaping and raglan decs until there are 2 sts.

Next row: K2tog. Fasten off.

RIGHT FRONT

Work from ** to ** as given for Left Front.

Change to larger needles and work Chart XI to end of chart, reading **knit** rows from **right** to left and **purl** rows from **left** to right, noting 10-st rep will be worked 4 (4-5-5-6-7) times.

Chart IX is shown on page 43.

With MC, cont in stocking st until work from beg measures 6 ins [15 cm], ending with a purl row.

Place pocket: Next row: K4 (4-5-7-10-12). K27 from st holder. Slip next 27 sts on a st holder. K10 (14-18-20-26-33).

Beg with a purl row, cont in stocking st until work from beg measures 16 ins [40.5 cm], ending with a purl row.

Work 1st to 5th rows of Chart X (X-X-XI-XI-XI) in stocking st.

Shape raglan: Keeping cont of chart, cast off 4 (4-5-6-7-8) sts beg of next row. 37 (41-45-48-56-64) sts.

Cont in Chart X or XI, noting raglan decs on every following 4th row 2 (1-0-0-0-0) time(s), then every following alt row until there are 21 (24-27-27-33-47) sts, then next 0 (0-0-0-0-14) rows, ending with 41st (45th-47th-47th-51st-53rd) row.

Cont in chart, noting neck shaping and raglan decs until there are 2 sts.

Next row: ssk. Fasten off.

SLEEVES

With MC and a pair of smaller needles, cast on 46 sts.

Work 2 ins [5 cm] (K1. P1) ribbing, as given for Back inc 4 sts evenly across last row and ending with a 2nd row. 50 sts.

Change to larger needles and work in Chart VII as given for Back for size **M**, noting 10-st rep will be worked 5 times.

With MC, cont in stocking st, inc 1 st at each end of needle on next and every following **10th (6th-6th-6th-4th-2nd)** row to **52 (58-64-68-72-70)** sts, then every following **12th (8th-8th-8th-6th-4th)** row to **56 (64-66-70-76-86)** sts.

Cont even until work from beg measures **17 (17-17-17-16-15)** ins [**43 (43-43-43-40.5-38)** cm], ending with a purl row.

Work 1st to 4th rows of Chart XII, reading **knit** rows from **right** to left and **purl** rows from **left** to right.

Chart XII is shown on page 45.

Shape raglans: Keeping cont of chart, cast off **4 (4-5-6-7-8)** sts beg next 2 rows. **48 (56-56-58-62-70)** sts.

Cont in Chart XII to end of chart, noting raglan decs.

Cast off rem **10 (8-8-8-10-10)** sts.

FINISHING

Pin garment pieces to measurements. Cover with a damp cloth, leaving cloth to dry.

Sew raglan seams.

His Version only: Front edgings: With RS of work facing, smaller needles and MC, pick up and knit **101 (101-106-111-111-**

111) sts evenly up left front edge. Cast off knitwise (WS).

Rep for right front edging.

Sew zipper under front edgings.

Her Version only: Buttonhole band: With RS of work facing, smaller needles and MC, pick up and knit **101 (101-106-111-111-111)** sts evenly up right front edge.

Knit 3 rows (garter st).

Next row: (RS). K2. *yo. K2tog. K**17 (17-18-19-19-19)**. Rep from * 4 times more. yo. K2tog. K2.

Knit 4 rows. Cast off knitwise (WS).

Buttonband: With RS of work facing, smaller needles and MC, pick up and knit **101 (101-106-111-111-111)** sts evenly down left front edge.

Work as given for buttonhole band, omitting all references to buttonholes.

Sew buttons to correspond to buttonholes.

Both Versions: Collar: With smaller needles and MC, cast on **9 (10-11-12-13-13)** sts.

1st row: (WS). Knit.

2nd row: K1. Inc 1 st in first st. Knit to last 3 sts. Inc 1 st in next st. K2.

Rep last 2 rows 4 times more. **19 (20-21-22-23-23)** sts.

Next row: (WS). Knit.

Next row: K1. Inc 1 st in next st. Knit to end of row.

Rep last 2 rows 5 times more. **25 (26-27-28-29-29)** sts. Place marker at end of last row.

Work in garter st (knit every row), until work from marker measures **13** (**13¹/₂-14-14¹/₂-14³/₄-14³/₄) ins [**33** (**34.5-35.5-37-37.5-37.5**) cm], ending with a WS row.**

Next row: (RS). K1. K2tog. Knit to end of row.

Next row: Knit.

Rep last 2 rows 5 times more. **19** (**20-21-22-23-23**) sts.

Next row: K1. K2tog. Knit to last 3 sts. K2tog. K1.

Next row: Knit.

Rep last 2 rows 4 times more. **9** (**10-11-12-13-13**) sts. Cast off.

Pin center of Collar to center of back neck edge making sure the edge of the collar with the smallest number of increase and decrease sts is at the neck edge. Match cast on and cast off sts of collar with cast off sts of front neck edge. Ease rest of collar into position. Sew in place.

Pocket edging: With RS of work facing, smaller needles and MC, K27 from pocket st holder, inc 1 st at center. 28 sts.

Beg on 2nd row, work 4 rows of (K2. P2) ribbing as given for Back. Cast off in rib.

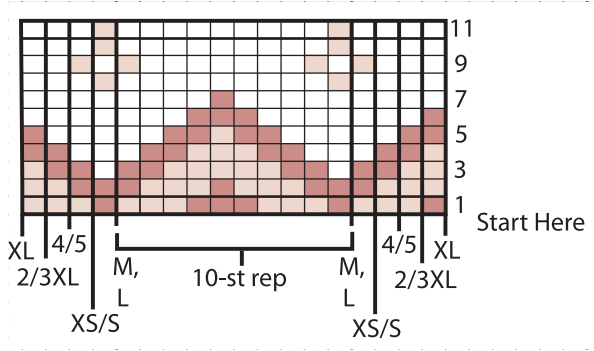
Sew sides of edging in position.

Sew pocket lining in position on WS.

Sew side and sleeve seams. 



Chart VII



Key

- = MC
- = Contrast A
- = Contrast B

Chart XI

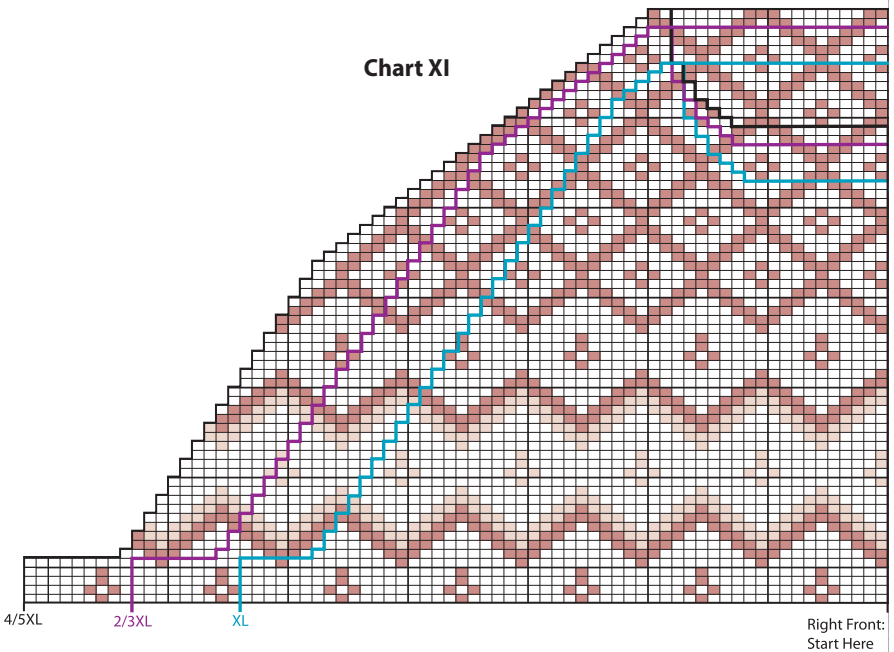


Chart VIII

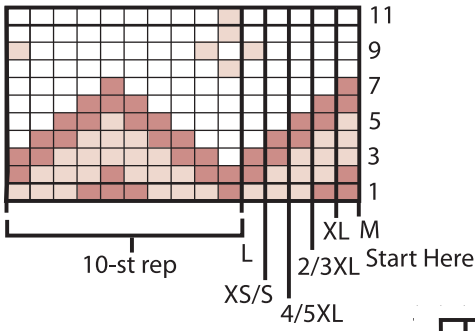


Chart IX

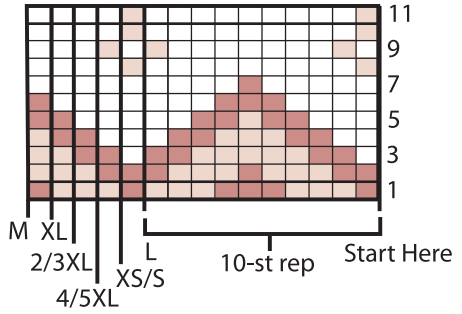


Chart XI (continued)

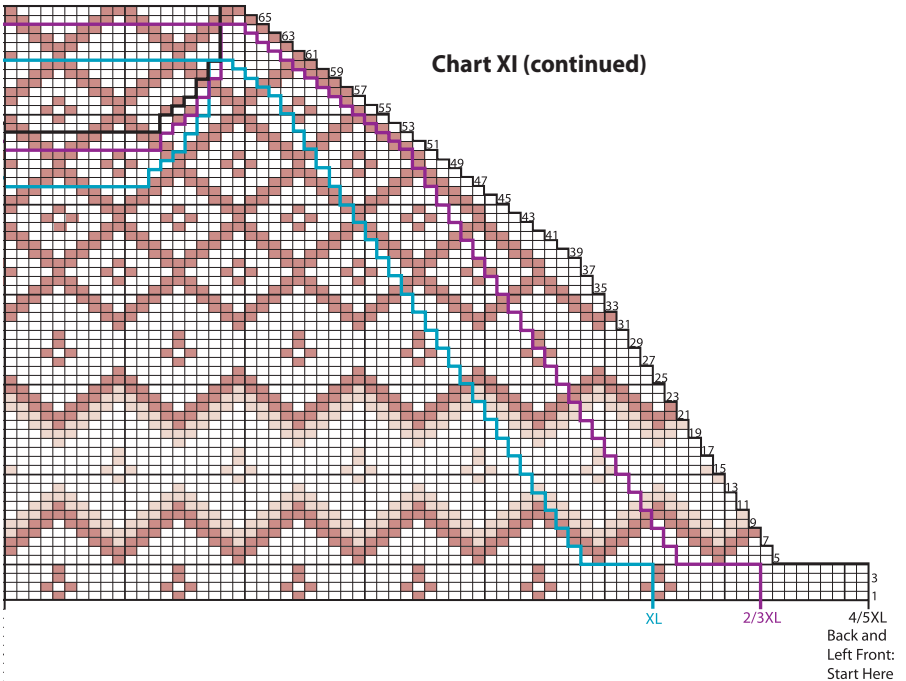


Chart X

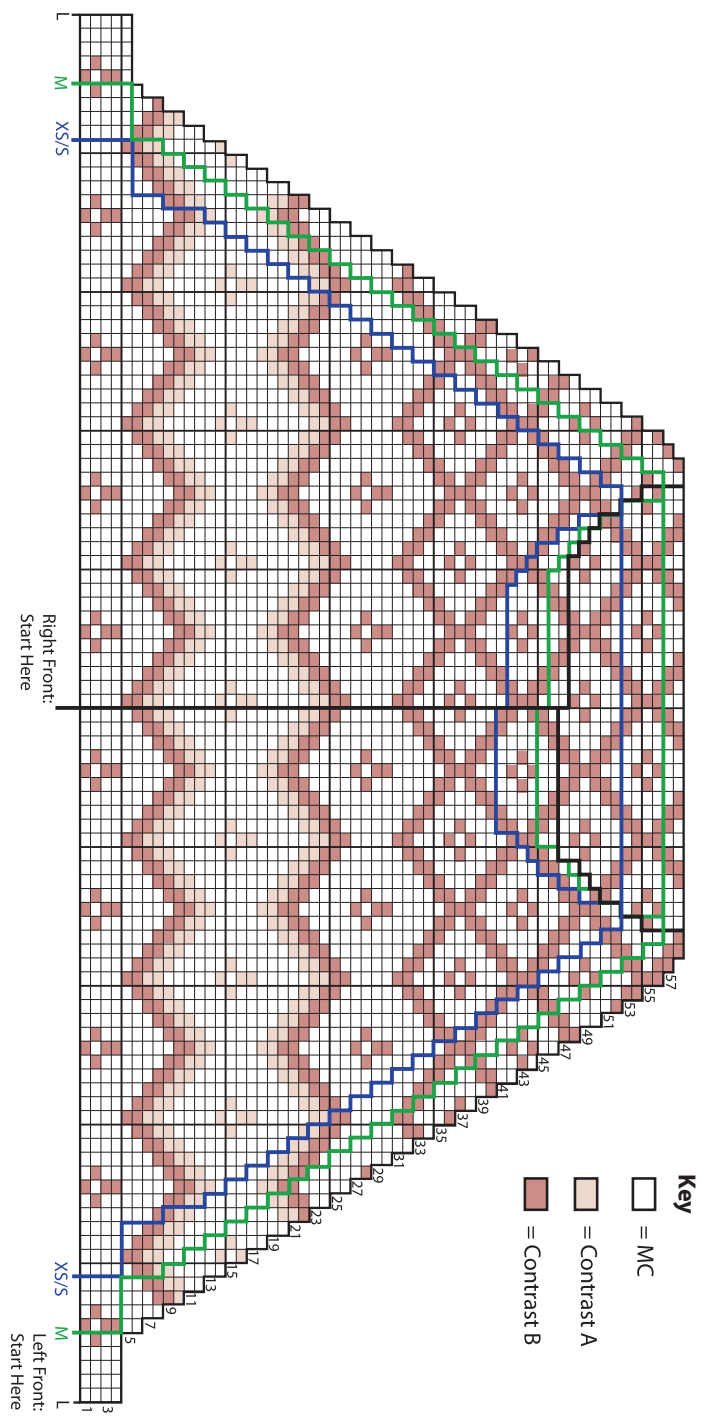


Chart XIII

